

NEWSLETTER – AUGUST 2020

Toowoomba Art Society Ltd

CURRENT EXHIBITIONS

28th July to 30th August 2020

Culliford Gallery



Toowoomba Art Society presents

At one with the Earth

by artist : Rosalie Eustace
July 28th to Aug 30th 2020

Works for sale

Eftpos available Free entry All welcome
Online exhibition <https://toowoombaartsociety.com.au/exhibitions/>

Perinet Gallery



Toowoomba Art Society

presents in the Perinet Gallery

ALL 4 ART

by Maureen Berry, Chris East,
Helen Harris & Anne Ott
28th July to 30th August

toowoombaartsociety.com.au/exhibitions/
Free entry. All welcome. Works for sale. Eftpos available

PRESIDENT'S REPORT

It's great to have exhibitions back on the walls. In **Late Renaissance**, members of Catherine Ketton's Thursday oil painting class tackle this technically demanding medium with enthusiasm. Essentially there are three themes; still life, portrait and landscape with the teacher demonstrating her skill in each area with "Orchid Blooming", "Pleasure" and "The Young Artist". Particularly successful examples of each genre are Allan Crichton's "After the Party", Andy Yates' "Meg" and Sharon Fletcher's "Phillip Island" and Angela Dakin's "Canola Field". Edna Peterson tackles every area, adding an alert koala in "Here's looking at You".

There and Back Again is a "pop up" members' exhibition. While paintings predominate, the 48 works include exemplary prints: Betty Tan's "Social Distancing" woodblock prints as seen in her recent book "People in Places", and Gillian Frederick's delightful books of monoprints. Other 3D works include Jenny Burgess' 3 embellished textile scrolls (amazing what can be done with recycled dog blankets), and Jacquie Rahley's raku "Tawny Frogmouth". The paintings and drawings come in a wide range of sizes and approaches from Mike Grice's larger-than-life "Portrait of the Artist's Mother" to Ian Hay's tiny "Out of Reach". Many of the themes are familiar: landscapes, including a signature Frank McCormick "Old Gum" and Susanne Wood's powerful pastel drawing "Winter Warmth"; flowers, which include Betty Searle's robust "Crimson Callistemons" and the subtle, semi abstract "Pretty in Pink" by Diana Battle. There are impressionistic works: Deidre Rutherford's "Country Meets City" and Kurt Timmins' "Adriatic storm". More unusual are Chris Gosley's "Leviathan" and Catherine Ketton's surreal "Still Life with Sand and Marbles".

A reminder: following regular reports of lights being left on, including toilets, please switch them off, as well as closing blinds, windows and doors, and turn off heaters when leaving. While teachers and group leaders usually do so, the last to leave must check everything. I'm also concerned at some people helping themselves to the children's art materials in studio 2. Could group leaders, particularly studio 2 users, please remind their members these are not for community use.

Final reminder: a considerable number of members have not yet renewed their 2020 memberships but still have until July 31 to do so. Otherwise they will not be able to participate in the Members' Spring Exhibition or any other TAS exhibition, and will have to pay the \$5 user's fee for every class from August 1. This has been a difficult year for us all, and we've all missed months at Culliford House, however the bills don't stop coming in. The Board of Directors reminds everyone that, pandemic or not, the very considerable and rising costs of running TAS continue unabated. Over the last quarter our expenses have completely swamped our significantly reduced income.

Allan Bruce (25.07.20)

welcome

A warm welcome to **Rishanthi Sajeewani Kumara-Singhe** and **Katie Whyte**. We hope you enjoy your experience at TAS and that you make full use of our many facilities and friendly atmosphere. Keep up to date with our newsletters, web page (toowoombaartsociety.com.au) and Facebook page (TAS – Toowoomba Art Society), as well as the noticeboard & printed materials in the corridor.

NB. If you have paid for membership online using direct deposit & have not received a receipt or membership card in the mail it could be because you did not give us your address/email/phone number. If this is you, please email your details to twba1godsall@gmail.com / Subject Attn. Sandra

DEADLINE LOOMS

2020/2021 Membership Fees – End of July

A reminder to members that in order to participate in the Annual Spring Members' Exhibition in September, membership fees must be paid for this year. The TAS Board has extended the grace period for receipt of payments until the end of July. To ensure you can exhibit your work in the September Members' exhibition and to continue enjoying TAS's many member activities and services, please renew your membership **before 31st July**.

CHILDREN'S ART CLASSES

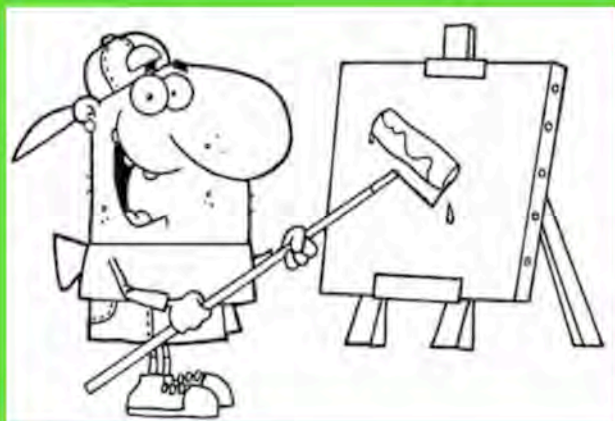
The children's art classes are proving popular, with classes available

- * Thursday 3:45 pm to 5:00 pm (some vacancies)
- * Saturday 9:00 am to 10:15 am
- * Saturday 10:45 am to 12:00 noon
- * Saturday 1:00 pm to 2:15 pm (2 vacancies)

For more information, please phone Gilly 0402 174 683 or email gilly@ccpetmotel.com



NEWS FLASH - 2020 ANNUAL SPRING MEMBERS EXHIBITION



Entry forms and 'Conditions of Entry' for our Annual September Members Exhibition have been circulated to all members with this newsletter. Hard copies are also available at TAS. So start thinking about your entry.

However please be sure to read ALL the conditions of entry and presentation requirements carefully before you sign the entry form to avoid disappointment when you deliver your artworks.

PLEASE REMEMBER ONLY TAS FINANCIAL MEMBERS AS AT 31 JULY ARE ELIGIBLE TO EXHIBIT!

IT'S YOUR ART SOCIETY

The Board welcomes your input. Any member wishing to bring an issue to the Board's attention should contact the President for inclusion on the agenda of the next meeting. Where possible the member should attend that Board meeting.

Members also are encouraged to attend Board meetings at any time to keep current with 'all things' TAS or keep up-to-date by reviewing the meeting minutes that are held on file in the library.

NEWSLETTER CONTRIBUTIONS

Members are invited to submit relevant TAS news items and images for our monthly newsletter. Please email to twba1godsall@gmail.com (subject line: 'Newsletter'). Each month the deadline for contributions for the next edition will be advised here.

Deadline for the next Newsletter – Saturday 29th August 2020, by 5:00pm

THEY'RE BACK.....!

Like TAS, other regional arts organisations that have been closed over the past months due to COVID-19, have re-opened their doors recently. Importantly, two of our municipal galleries now are welcoming back patrons and taking every measure to ensure the safety and well-being of visitors.

As always, Toowoomba Regional Art Gallery (TRAG) and Goombungee's Rosalie Gallery have an exciting range of exhibitions on display. TAS has been granted permission to reproduce images from these exhibitions in our August Newsletter only, to offer our members inspiration after months of 'art-iso' lockdown (see Photo Gallery below).

All shows have a broad appeal and our Saturday Printmakers are encouraged to catch TRAG's various print exhibitions - in particular, the large prints from the City Collection in Gallery 1. TAS's life drawing artists also will find the figure studies featured in TRAG's Amos Gallery of specific interest.

Patrons will be very welcome but will understand that their gallery experience under current circumstances will be different from past visits, as critical COVID operational guidelines are implemented, including...

• Initial opening hours:

Toowoomba Regional Art Gallery – 10am-4pm from Tuesday to Thursday
Rosalie Gallery, Goombungee – 10.30am-3.30pm on Thursday and Friday

- If you do not feel well, please do not visit
- As required by State Government, visitors will need to complete a form, providing name, address, phone number, and date and time of visit
- There is limited capacity in each gallery space and staff monitoring will apply
- Hand sanitiser stations are provided for use
- Additional cleaning has been put in place
- Visitors are requested to comply with current physical distancing guidelines of 1.5 metres

Be sure to visit soon. Get a renewed 'Art Buzz'. Support your regional Galleries.

PHOTO GALLERY 1

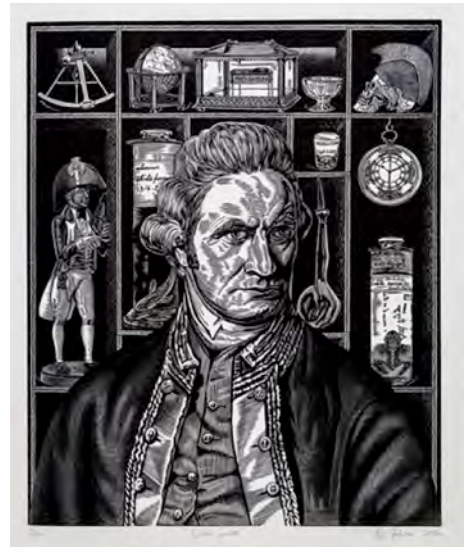
TRAG Exhibitions

Breaking News: Captain Cook in 2020 Lindsay Galleries and Small Gould Gallery 14 July – 12 November 2020

Captain James Cook's three historic voyages across the Pacific Ocean 1768-1780 are *breaking news* – especially in Australia this year. New information, interpretations and images about his voyages make them not simply past events but also currently occurring and developing stories. This exhibition showcases original engravings from the Lionel Lindsay Gallery and Library Collection's extensive holdings of Cook literature as well as contemporary artworks that present alternative and Indigenous views of Cook's voyages.

Image right

Rew HANKS / *Cook's curios* 2012 / linocut / edition 5/30 / 51 x 42cm / Toowoomba Regional Art Gallery – Toowoomba City Collection 2332 / Reproduced by kind permission © the artist



Multiple Originals: Prints from the Collection Gallery 1

14 July – 6 September

Large prints from the Toowoomba Regional Art Gallery – Toowoomba City Collection that showcase a range of printmaking methods from traditional to contemporary.

Image left

George BALDESSIN / *MM and chair* 1977 / etching and aquatint / 72 x 60cm / Toowoomba Regional Art Gallery – Toowoomba City Collection 369/ Courtesy of George Baldessin Estate and Australian Galleries Melbourne and Sydney

Object/Subject: Figure studies from the collection Amos Gallery

14 July – 6 September

A small selection of works from Toowoomba Regional Art Gallery – Toowoomba City Collection that use the figure as subject.

Image right

Irene AMOS / *React repent (refresh repeat)* c. 1975 / charcoal on paper / Toowoomba Regional Art Gallery – Toowoomba City Collection 365



PHOTO GALLERY 1 (cont.)



NK Alan ceramics and drawing
Cam Robertson Gallery
21 July – 20 August

Showcasing ceramic and drawing works of local artist Nathaniel Kemp (N.K. Alan).

Image left

Nathaniel KEMP / *Bunya Gaga* 2019 / porcelain slip / 19cm height /
Reproduced by kind permission© the artist

Deep in Conversation
Cam Robertson Gallery
29 August – 27 September

An exhibition of acrylic portraits on canvas by local artist, Sue McMaster.

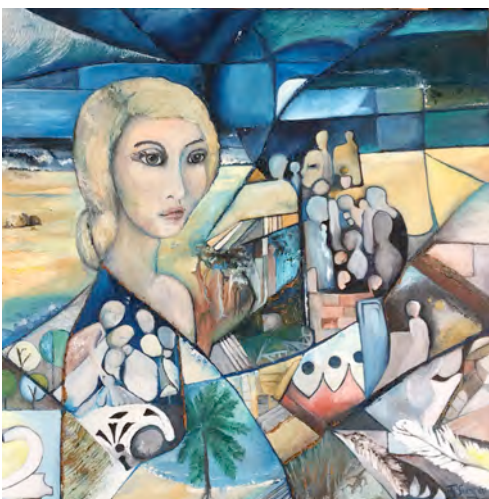
Image right

Suzanne McMASTER / *Deep in Conversation* 2019 / acrylic on canvas /
100 x 100 x 3.8cm / Reproduced by kind permission © the artist



PHOTO GALLERY 2

Rosalie Gallery Exhibitions



Reflections and Light – Artists of Crows Nest
Rosalie Gallery
6 August – 28 August 2020

Artists of Crows Nest present a creative and diverse interpretation of their theme *Reflections and Light*.

Image left

Julie SWEENEY | *She reflects upon* 2020 | oil on canvas | 61 x 61cm |
Reproduced by kind permission © the artist