


# TAS NEWSLETTER FEBRUARY 2023

## UPCOMING EXHIBITIONS

Toowoomba Art Society  
invites you to  
**The Four Amigos**  
an exhibition of works by  
**Ros Cranch, Eddie Gunn,  
Jacqui Rahley & Betty Searle**



February 28th - March 26th  
Official opening  
2pm Saturday March 4th  
All welcome - works for sale - eftpos available

**Nature Morte**  
A group exhibition in the Perinet Gallery by  
Toowoomba Art Society's Thursday Night Painting Class



**FEBRUARY 28**  
to  
**MARCH 26**  
2023

Opening: Saturday March 4th at 2pm  
In Culliford Gallery, Toowoomba Art Society

### From Amanda, President

What a wonderful start to 2023. The hallway and studios are full of activity and chatter with the groups commencing their year. The opening of the first exhibitions, 'Sunrises and Sunsets' and 'Eclectica', drew a large crowd of family, friends, and supporters. It turned into a lovely social afternoon for all and showed what a draw card TAS is to the Toowoomba community.

We have received a reply from the Toowoomba Regional Council regarding our request to create a direct link to the park. Due to heritage laws governing the park, our request was denied.

At last month's Board meeting we appointed Kurt Timmins as Board Secretary after performing the required duties for some time. Thank you, Kurt, for your dedication to TAS as Treasurer and Secretary. It was also agreed that the gas connection to TAS be disconnected as it was costing more than the amount of gas we were using. It has now been disconnected and an electric hot water system installed. The member survey was discussed resulting in a revamp of the exhibition committee to follow up on exhibition procedures, volunteer job opportunities listed in the newsletter, quotes sought for additional signage to advertise the gallery, and the newsletter to now be published at the end of the month.

TAS runs on the willingness of many people. Whether you are paid or volunteer, I appreciate the time and spirit that you show. We have advocates who spread the word about what is happening at TAS and attend events to show their support. Without the time and effort contributed by many, TAS would not function. Each contribution leads to success.

### 2023 Committees and Volunteers

**Finance:** Kurt Timmins, Ian Hay, David Kinlan, Peter Fitzpatrick  
**Exhibitions:** Lee Perinet, Mike Grice, Allan Bruce, Sandra Willis  
**Facilities:** Eddie Gunn, Peggy Vanderplas, Lee Perinet, Allan Bruce  
**Community Engagement:** Amanda Digweed, Catriona Fitzgerald  
**Donations Coordinator:** Robyn Croad  
**Librarian:** Diane Spanswick

### Please Be Mindful

Gail and our volunteers do a great job in keeping the floors as clean as possible. Please help them out by closing the back screen door when entering and exiting from the back carpark.

### Exhibition Etiquette

The current exhibition is using shelves and plinths to display artwork. Please respect the artists and their work by not placing or leaving items on the shelves and plinths at any time. We would not like to have to ask you to pay for damages.

The sink!!!! Have you seen the back sink? Thank you to Bill and Noelle Hodges for volunteering their time to scrub the back sink and bring it back to life. This was no easy task!

**\*please\***  
**LET'S**  
**KEEP IT**  
**CLEAN**

There was a terrific turnout of around 150 friends and art lovers at the opening by Sandy Pottinger of "Eclectica" in Culliford Gallery & "Sunrises and Sunsets" by Robyn O'Sullivan in the Perinet Gallery on Saturday 4<sup>th</sup> February. Wonderful artworks, great food & drinks were enjoyed by all. Sandy's review of "Eclectica" is below as well as photos from the opening.



*"Eclectica", the exhibition by Amanda Digweed and Noelle Hodges is the first Art Society exhibition for 2023. It is a splendid beginning and sets an impressive benchmark for this year's exhibition series.*

*Shared exhibitions are rewarding experiences. While they may be challenging, they offer exciting opportunities to exchange ideas, explore techniques, entertain new possibilities, enhance, and extend knowledge and skills.*

*"Eclectic," as defined by dictionaries and Madame Google, is about making selections, be they ideas, styles, or a state of mind, from broad and diverse sources. 'Eclectic' pushes the boundaries of easy identification. It collects souvenirs of memory, it embraces colours, surfaces, textures-all with their own histories and associations- to weave individual responses to the world. Amanda and Noelle draw inspiration from each other and from nature. Pliable twigs and palm fronds are crafted into vessels and sculptural forms that assume a new identity that still honours the natural environment.*

*Textiles, printmaking, artist books, drawings, ceramics, and the inclusion of found objects connect with memories and personal histories through the significance and symbolism of placement and combination.*

*The thoughtful and spacious exhibition design gives uncrowded emphasis to each object and image. It encourages an intimate appreciation of detail while paying homage to the art and to the artists.*

*"Eclectica" is an ode to communication, respect, ingenuity, curiosity, and the joy of sharing. The artists are simpatico, they speak a language of art-making that endorses an individual approach but with outcomes that complement each other's creative vision.*

*The exhibition epitomises what the Toowoomba Art Society is all about: participation, learning, involvement, artistic communication, company, and the opportunity to shares ideas, conversations, and artworks with like-minded people, and, through exhibitions, the wider community.*

**Sandy Pottinger**









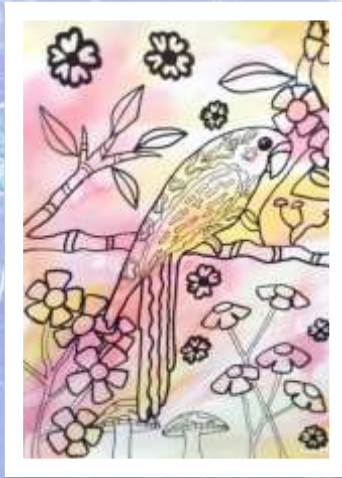
### Children's Art

The children's art program caters to a variety of ages and abilities using achievable activities for individuals.

Students start with a subject that interests them and through learning a variety of techniques, represent that subject in their own style. Each technique is an opportunity to explore different mediums such as oil pastels, acrylic pens, chalk pastels, and dyes for, allowing the students to develop an understanding of the materials. Alongside the use of materials, students learn the principles and elements of design such as colour, repetition, contrast, harmony, size, layering, and line to assist their artistic development.

Students are encouraged to interpret resource images to produce work that is unique to them.

Gilly Carroll, Art Teacher







**WATERCOLOUR CLASSES WITH BRUCE GRIFFITHS**  
 Bruce is taking registrations for his 9-week Term 2 Watercolour Progressive course at TAS each Friday 8.30 - 12.30 commencing 21<sup>st</sup> April until 16<sup>th</sup> June.  
 This is a 2nd level skills course geared for those who have brush mileage & are looking for a challenge and for those who would like to refresh their skills.  
 Progressive classes are popular as our aim is to complete a painting each session.  
 Numbers are limited so early bookings essential.  
 Contact Bruce on 0403 346229 for details.



The annual Members Autumn 45X45 exhibition is fast approaching! This year the exhibition will be held from **28<sup>th</sup> March to 30<sup>th</sup> April**.

Entry details – artist, title, medium & sale price, must be submitted to TAS (preferably digital) by **9am Wednesday 22<sup>nd</sup> March** so that labels can be printed & attached to your work once hung. If you wish to exhibit your painting online, please send a good quality image labelled as follows: Title Artist Name medium dimensions price.

To ensure that all works hang at the same angle, please attach D rings **exactly 10cm** from the top of the frame. **Do not frame the canvas.**

**45 X 45 canvases are available for \$20 at the TAS office from 9am to 12noon on Mondays & Wednesdays.**

### WELCOME NEW MEMBERS

This month we are delighted to extend a warm welcome to new members:

**Australian Textile and Surface Design Association, Margie Bramston, Rhonda Butler, Susan Deller, Christina "Dell" Drury, Sandy Eastoe, John Gasparotto, Heather Hacker, Susan Hoy, Mary Gilchrist, Carole Jamieson, Helen Pearson, Kathy Nolan, Suellen Terry, Patricia Thomas and Angela Trace.**

We hope you enjoy your experience at TAS and that you make full use of our many facilities and friendly atmosphere. Keep up to date with our Newsletters, web page - [toowoombaartsociety.com.au](http://toowoombaartsociety.com.au) - Facebook page - TAS - Toowoomba Art Society - as well as the noticeboard & printed materials in the corridor.

**N.B. It is extremely important that if you pay for membership online using direct deposit, please forward the following to [twba1godsall@gmail.com](mailto:twba1godsall@gmail.com)**

1. Confirmation of payment / bank transfer that you receive from the bank  
AND
2. Contact details: your address / email / phone number/  
Subject: Membership

If you do not receive a receipt or membership card in the mail within 2 weeks, it is likely your payment could not be identified and/or because you did not provide your contact details.



Direct Deposit payments can be made to TAS for membership subscriptions and renewals, bus trips, workshops, art purchases etc.

**NB. It is important to include your name and for what the payment is being made, e.g. membership renewal &/or bus trip, to ensure the payment is credited to you.**

Please forward a copy of your transaction record to [twba1godsall@gmail.com](mailto:twba1godsall@gmail.com) / Subject: Membership Toowoomba Art Society Ltd.

BSB 638-060  
 Heritage Bank A/C 13549774  
 (Heritage Bank members code S13)

Ref: (Your name).....

Being payment for .....

### For Your Information

Copies of the minutes of the latest monthly meetings of the TAS Board are on the TAS noticeboard and older copies are kept in the library for your perusal.

### For Your Information

Hard copies of past newsletters are kept in display folders in Studio 1 and are also available on TAS webpage [www.toowoombaartsociety.com.au](http://www.toowoombaartsociety.com.au)